



USB TYPE-C 3.1 SATA 2.5" /3.5" DUAL BAY HARD DRIVE DOCKING STATION



The Sabrent SATA Hard Drive Docking Station enables you to access desktop or laptop hard drives, without the frustration of assembling hard drive enclosures. By inserting a 2.5"/3.5" SATA hard drive directly into this docking station, you can quickly access drive contents and transfer files. Plus you can swap out hard drives effortlessly with Plug & Play mounting. Transfer data quickly and easily through USB Type-C 3.1 at high speeds up to 10Gbps.

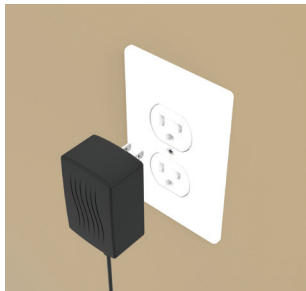
SATA DOCKING STATION MODE

1

Connect the **Power Adapter** to the back of the dock

**2**

Connect the **AC Power Cord** to a power outlet

**3**

Connect the **USB Cable** to the back of the dock

**4**

Connect the other end of the **USB Cable** to your **Computer USB Port**



Note: If your computer has a **Type-C** port use the **Type-C** cable.
If your computer has a **Type-A** USB port use the **Type-C - Type-A** cable.

5

Insert your hard drive in **HDD1**



6

When using a second hard drive,
insert it in **HDD2**



7

Press the **Power Switch** to the
ON position



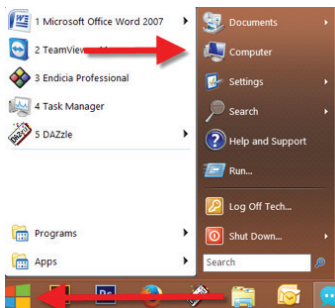
8

You will get a
RED LED on POWER



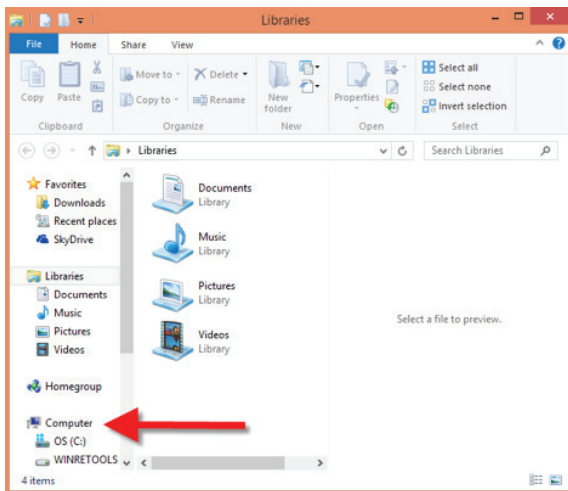
WINDOWS PC HARD DRIVE WITH DATA/FILES

Click on the **Start Icon** located on the bottom left of the screen and then click on **Computer**



Note:

You can also click on the **File Explorer Icon** and then click on **This PC or Computer**

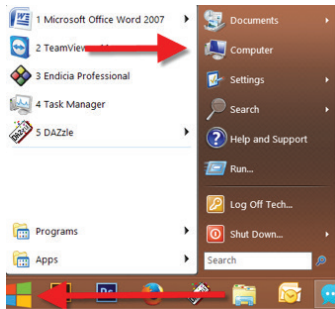


You should get a new drive letter every time you insert a hard drive with data/files

Name	Type	Total Size
OS (C:)	Local Disk	
WINRETOOLS (D:)	Local Disk	
DVD RW Drive (E:)	CD Drive	
New Volume (F:)	Local Disk	
Local Disk (G:)	Local Disk	

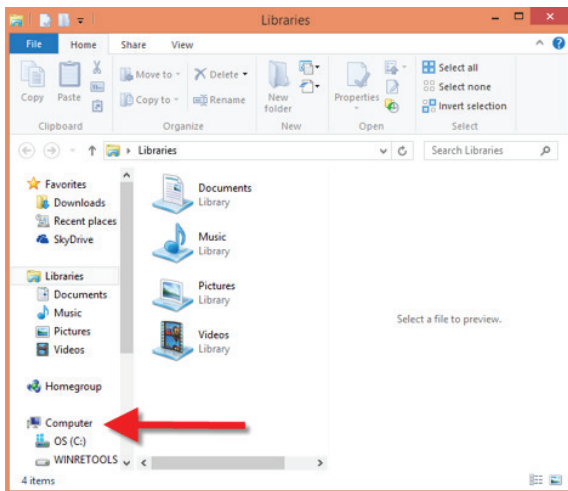
WINDOWS PC NEW HARD DRIVE SETUP (HARD DRIVE WITH NO DATA/FILES)

Click on the **Start Icon** located on the bottom left of the screen
and then **RIGHT** click on **Computer**

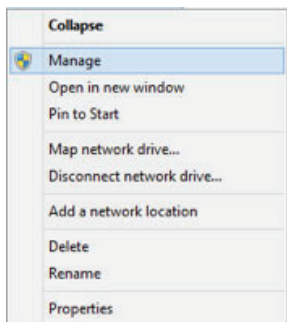


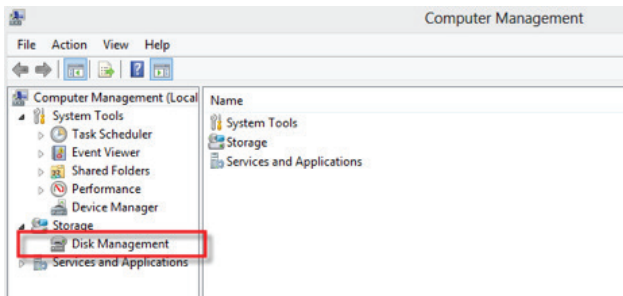
Note:
You can also click on the **File Explorer Icon**
and then click on **This PC or Computer**





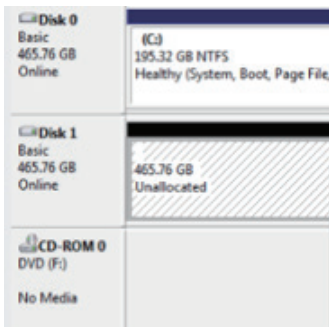
Click on **Manage**



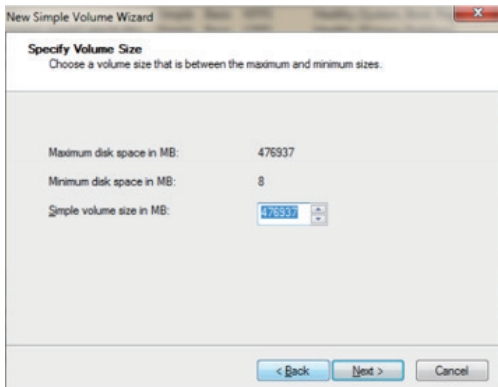


**Note: Disk 0 should be your internal hard drive
Disk 1 should be your external hard drive but SETUPS MAY DIFFER**

RIGHT click on **Unallocated** and click on **New Simple Volume**

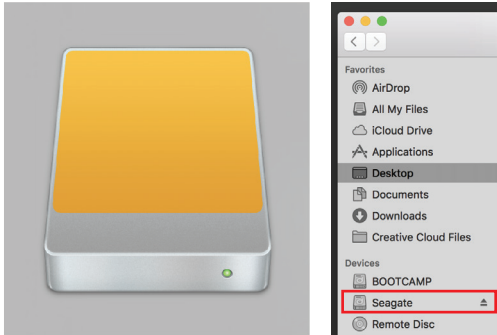


Go through the **Setup Wizard** to assign a drive letter



MAC OS HARD DRIVE WITH DATA/FILES

A new Icon should pop up on your main screen each time you insert a hard drive with DATA/Files

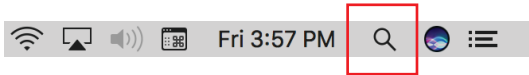


Click on the Icon to view your hard drive

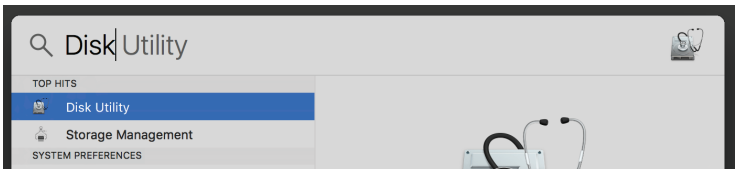
Note: You can also click on the Finder icon and select your hard drive under Devices

MAC OS NEW HARD DRIVE SETUP (HARD DRIVE WITH NO DATA/FILES)

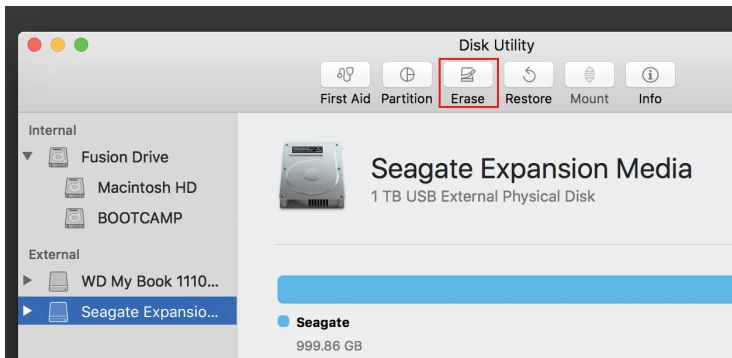
Click on the Search icon on your toolbar



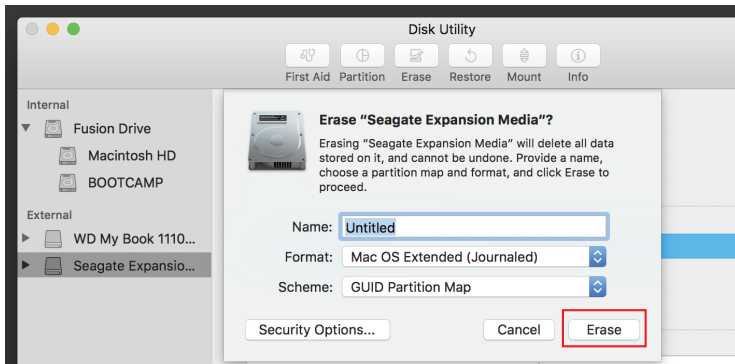
Type in Disk Utility and click on it



Click the icon for your external hard drive located in the sidebar on the left
Click on the Erase tab at the top of the window



Select the volume format you want and give it a name



Click on erase

STANDALONE DUPLICATOR MODE LED INDICATORS

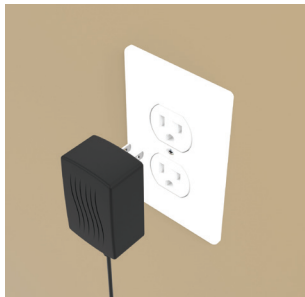
1 POWER	Power LED
2 SOURCE HDD1	Source Hard Disk
3 100%	Clone Process 100%
4 75%	Clone Process 75%
5 50%	Clone Process 50%
6 25%	Clone Process 25%
7 TARGET HDD2	Target Hard Disk
8 CLONE BUTTON	Press 2X to Clone


1

Connect the **Power Adapter**
to the back of the dock


2

Connect the **AC Power Cord**
to a Power Outlet



**Note: Do not connect the USB cable
to a computer when cloning**

3

Press the **Power Switch** to the **ON** position



4

Insert your **Source Disk** in **HDD1**



5

Insert your **Target Disk** in **HDD2**



6

Hold down the **CLONE** button until the **Blue LED on 100% illuminates**, then quickly let go and press the **CLONE** button



Your Source Disk must have equal or less Capacity when compared to your Target Disk
Your Target Disk must have equal or more Capacity when compared to your Source Disk

7

A **Blue LED** will flash on **25%** indicating that the cloning process has begun



8

The cloning process is complete when all the lights turn solid blue **25%-100%**



Note: The cloning process can take a couple minutes or up to 4 hours depending on the Files/Disks that are being cloned

Finally press the power switch to the OFF position and eject your drives

Notes

- All data in HDD 2 will be deleted once offline clone starts.
- We highly recommend backing up all your data first before you clone your hard drive.
- Hard drives with bad sectors might not clone. Simply replace it with a new hard drive.
- If the capacity of HDD 2 is bigger than HDD 1, the capacity remaining in HDD 2 upon completion of the offline clone will show as Unallocated. Go into Disk Management on Windows/Disk Utility on Mac and allocate the remaining capacity.

TROUBLESHOOTING/SUPPORT

Power LED does not come on?

- Make sure that you have a tight connection between the power adapter and dock.
- Try it on a different power outlet.

HDD LED does not come on or turns off during offline clone?

- Re-seat the hard drive into the bay.
- Try it on the second HDD bay
- Swap the hard drive out with a spare.

Cloning process will not start?

- Power off the dock, re-seat drives, power back up and try again.
- Check if the capacity of HDD 2 is larger or equivalent to that of HDD 1.

